

SENEBOGEN

4t TELEHANDLER

340G



 100 kW /  4t /  7.7 m /  **MULTICAB**

Stage V

340G

The telehandler. With SML power.

Our Multi Line telehandler combines the advantages of both telehandler and wheel loader technology in one unique machine. We call these advantages SML power. A specialist team develops and produces this unique product range at our Wackersdorf plant. Built for users who expect more than just a traditional telehandler.

THE BEST OF BOTH WORLDS



Telehandler or wheel loader?
Choose both!

→ [www.sennebogen.com/news/
videos/340-g-serie-mit-sml-power](http://www.sennebogen.com/news/videos/340-g-serie-mit-sml-power)

Optimal power transmission
thanks to Z kinematics

**Hydraulically
elevating cab**
for unique visibility

Multi-functional
hydraulics for a wide range of
attachments

Robust steel construction
for demanding applications

Powerful drive train
for high traction and driving speeds. Stage V
engine for high power and torque.

EVERYONE TALKS
ABOUT VISIBILITY.
WE ACTUALLY
DELIVER IT.

ELEVATING CAB AND 360° ALL-ROUND VISIBILITY

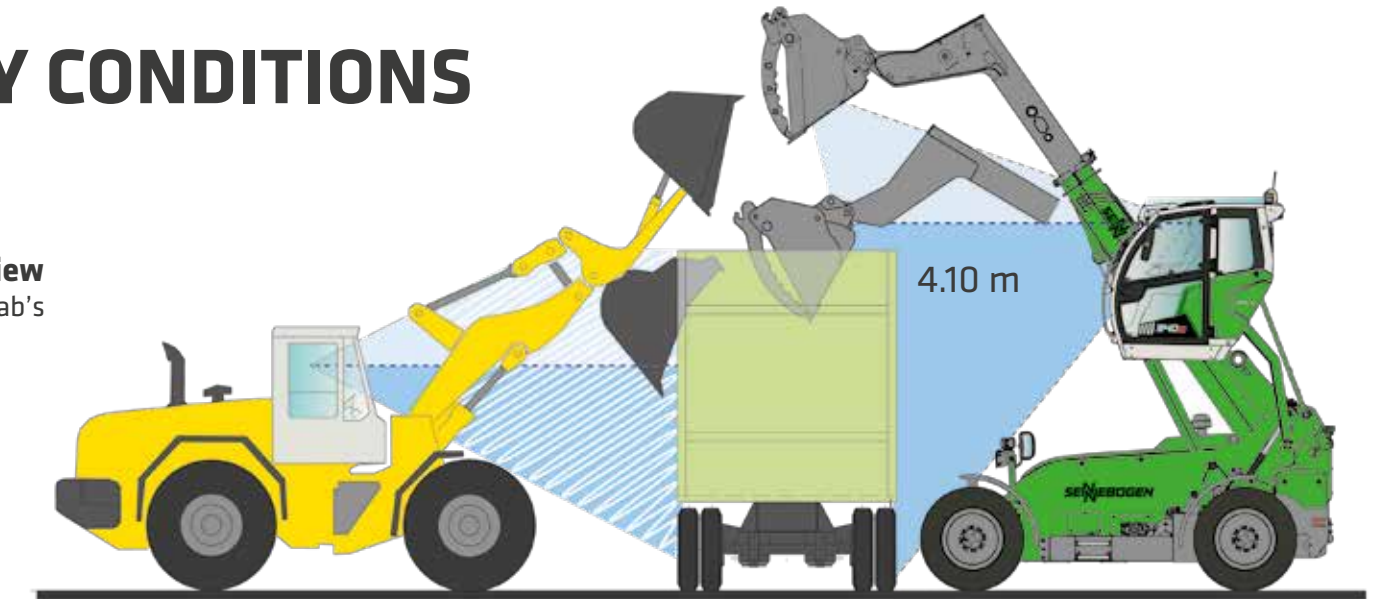


Take a look inside the
elevating cab and enjoy
the view.

→ [www.sennebogen.com/news/videos/
340-g-serie-hochfahrbare-kabine-mit-360-rundumsicht](http://www.sennebogen.com/news/videos/340-g-serie-hochfahrbare-kabine-mit-360-rundumsicht)

OPTIMAL VISIBILITY CONDITIONS

- **Optimal loading process thanks to an ideal view**
into the truck or container provided by the elevating cab's 4.10 m viewing height
- **Safety even when maneuvering**
Good view of all four of the machine's tires
- **Greater visibility and safety**
True 360° all-round visibility thanks to large glass panels





GREATER RANGE.
OPTIMAL STORAGE VOLUME.

ROBUST. DOWN TO THE LAST DETAIL.

STEEL FRAME

The machine's high-strength solid steel frame meets the most demanding service life requirements and has been optimized using the FEM (finite element method). It relishes demanding and dynamic applications. SENNEBOGEN's own steel construction experience ensures the best possible quality.

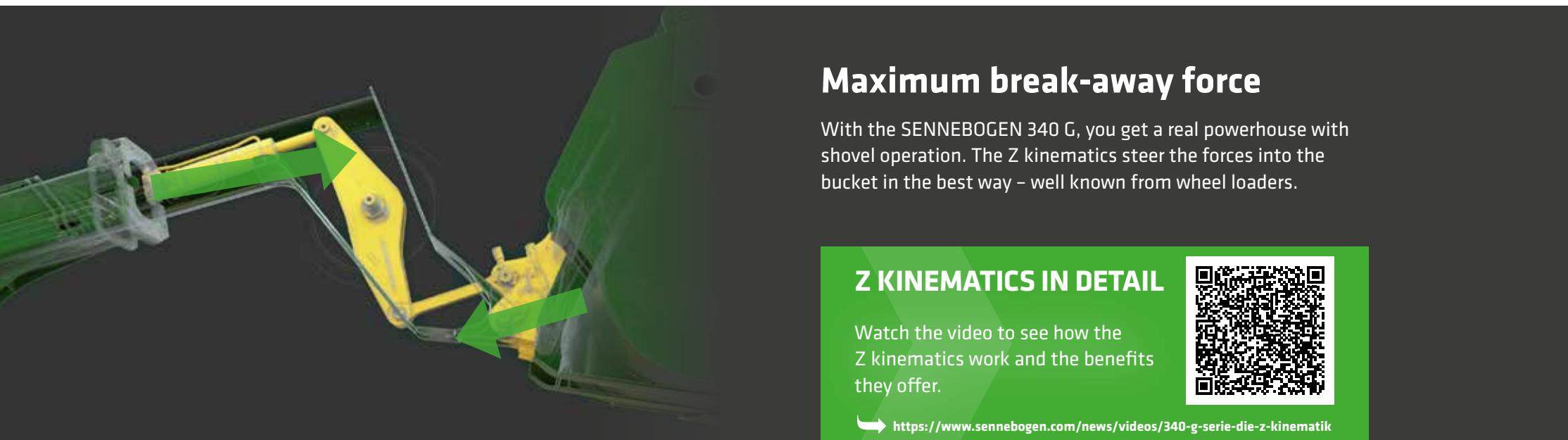
STEEL TELESCOPIC BOOM

The robust telescopic boom has been designed with state-of-the-art tools and optimized for heavy-duty applications. The central positioning and sophisticated shape of the boom optimally transfer the forces into the frame. Stress-free operation enables end position damping on both sides in the telescopic cylinder.

The central and side-guided design optimally absorbs all thrust forces and the robust frame remains dimensionally stable. The telescopic boom is located in the best possible position – with the elevating cab, the operator can always see along the boom.



THE TELEHANDLER WITH WHEEL LOADER TECHNOLOGY.



Maximum break-away force

With the SENNEBOGEN 340 G, you get a real powerhouse with shovel operation. The Z kinematics steer the forces into the bucket in the best way – well known from wheel loaders.

Z KINEMATICS IN DETAIL

Watch the video to see how the Z kinematics work and the benefits they offer.



➔ <https://www.sennebogen.com/news/videos/340-g-serie-die-z-kinematik>

Tool change at the push of a button

The robust SENNEBOGEN hydraulic quick-change system perfectly complements the telehandler's Z kinematics: reinforced frame, large-scale bolts, dual-action locking cylinder – everything can be operated at the push of a button.



STRONG. LIKE NO OTHER.



ALWAYS AN OPTIMAL MIX OF TRACTIVE FORCE AND SPEED.



ALWAYS FULL POWER.

THE POWERFUL AND CLEVER DRIVE TRAIN

The 340 G's variable travel drive always supplies generous amounts of power thanks to the combined efforts of the diesel engine and the hydraulic pumps.

The innovative control of the drive unit ensures that the drive engine in the Compact Drive gearbox provides rapid travel or high torque as required.

The system will automatically guarantee the optimal setting for fast travel, handling an uphill gradient, or picking up heavy materials.

By default, the machine travels at a maximum speed of 20 km/h. But speeds of 40 km/h are no problem for the powerful unit.



Max. tensile/thrust force (63 kN/65 kN) or max. vehicle speed (40 km/h)



COMPACT DRIVE®

The series standard Compact Drive gearbox operates extremely effectively and with low fuel consumption in a closed circuit. The technically advanced components of the transmission – adjustable hydraulic engine and gear drive – work optimally together and ensure a highly flexible working range.

Similarly, this unit impresses with its compact and space-saving design, which is also very durable and extremely reliable – whether at high speeds or high thrust/traction forces.



MULTI CAB

THE PREMIUM CAB.

Our comfort cab means operators can concentrate on their work and relax at the same time. Protected against excessive noise and vibration, operators can devote themselves to their work. The excellent view from the cab, and the ergonomically arranged and resonant control elements ensure a pleasant work situation. The multiple storage options, various connections (USB, 12 V, 24 V), and an air conditioning system as standard complete the concept of "working in the comfort zone".



Comfortable footswitches for infinitely variable cab height adjustment



Simple control of the comfort functions via a membrane keypad



Air conditioning as standard for pleasant working conditions



Spacious workplace with air-suspended comfort seat

SOPHISTICATED TECHNOLOGY. ALWAYS RELIABLE.



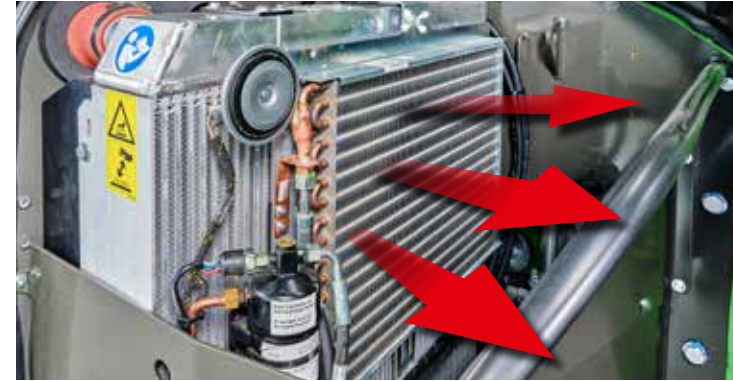
REVERSIBLE FAN AS STANDARD



Video: The reversible fan provides many benefits, especially in dusty environments and when in continuous use.

→ www.sennebogen.com/news/videos/340-g-serie-hohe-servicefreundlichkeit-und-zuverlaessige-technik

SOPHISTICATED DOWN TO THE LAST DETAIL



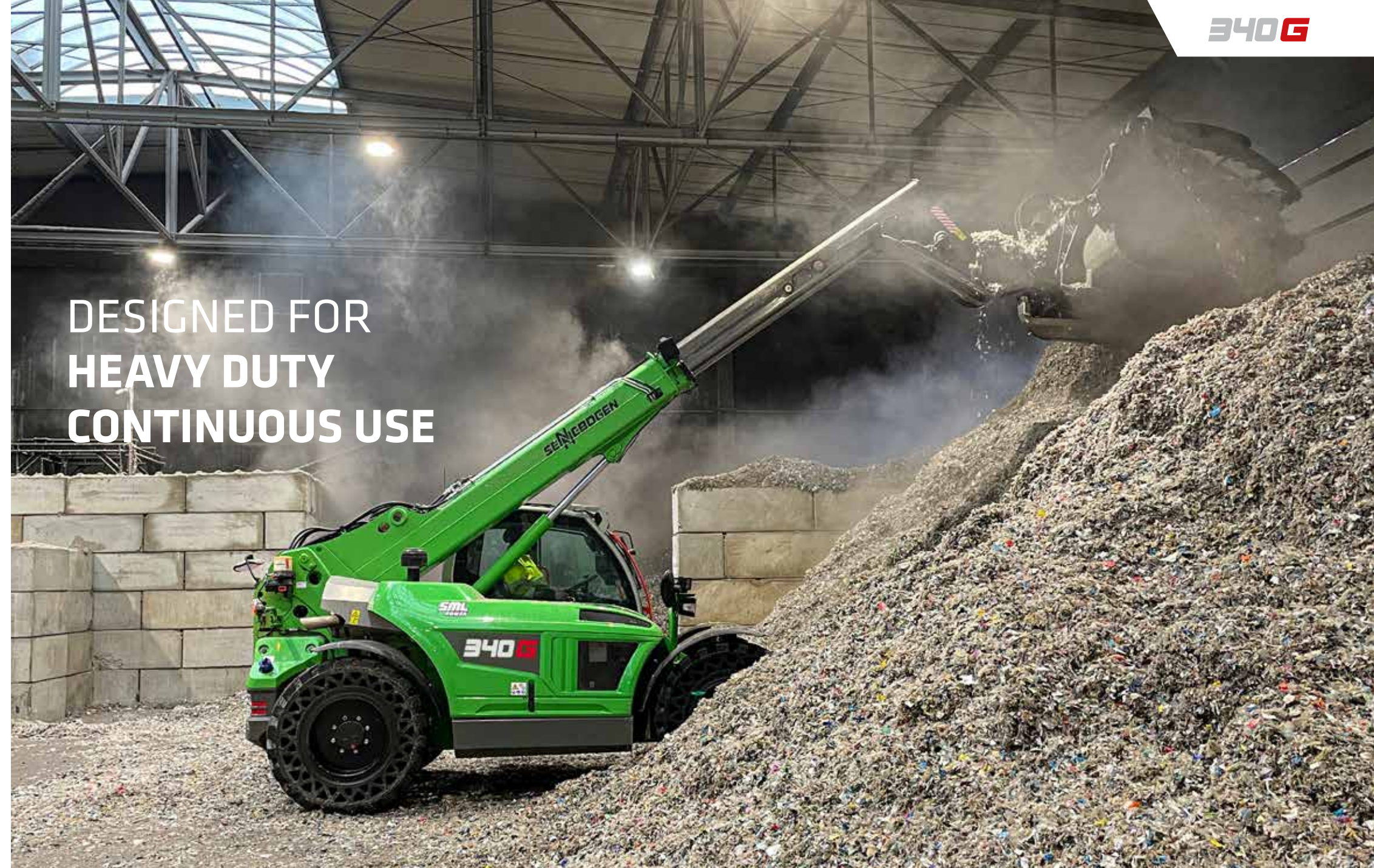
The SENNEBOGEN 340 G always works productively. The powerful reversible fan comes as standard and reliably ensures free air intake and thus optimal cooling performance, even in the most adverse conditions.



Working with fewer refueling stops: Thanks to an enormous diesel tank, the 340 G keeps you moving for longer, even in multi-shift operations.

Subject to technical changes. Additional options available upon request.

DESIGNED FOR HEAVY DUTY CONTINUOUS USE



Subject to technical changes. Additional options available upon request.

TECHNICAL DATA, EQUIPMENT

OPERATING DATA	
OPERATING WEIGHT ¹	9.4 t
STACKING HEIGHT	7,700 mm
MAX. LOAD CAPACITY (LSP 600 MM)	4.0 t
MAX. LOAD CAPACITY AT MAX. HEIGHT	2.6 t
MAX. LOAD CAPACITY AT MAX. REACH	1.7 t
MAX. TRAVEL SPEED	20/30/40 km/h
TENSILE FORCE ²	63 kN
BREAK-AWAY FORCE ON THE SHOVEL ³	65 kN

DIESEL ENGINE	
TYPE	Stage V Cummins F3.8 FR95683 Nominal engine power: 100 kW / 2,200 rpm Standard operating point: 100 kW / 2,200 rpm ECO operating point: 91 kW / 1,600 rpm
EXHAUST AFTERTREATMENT	DOC + SCR + DPF
DISPLACEMENT	3.8 l
MAX. TORQUE	550 Nm

HYDRAULIC SYSTEM	
OPERATING PUMP	Load sensing axial piston variable displacement pump
OUTPUT	170 l/min
WORKING PRESSURE	300 bar
OUTPUT ZH1 ⁴	100 l/min

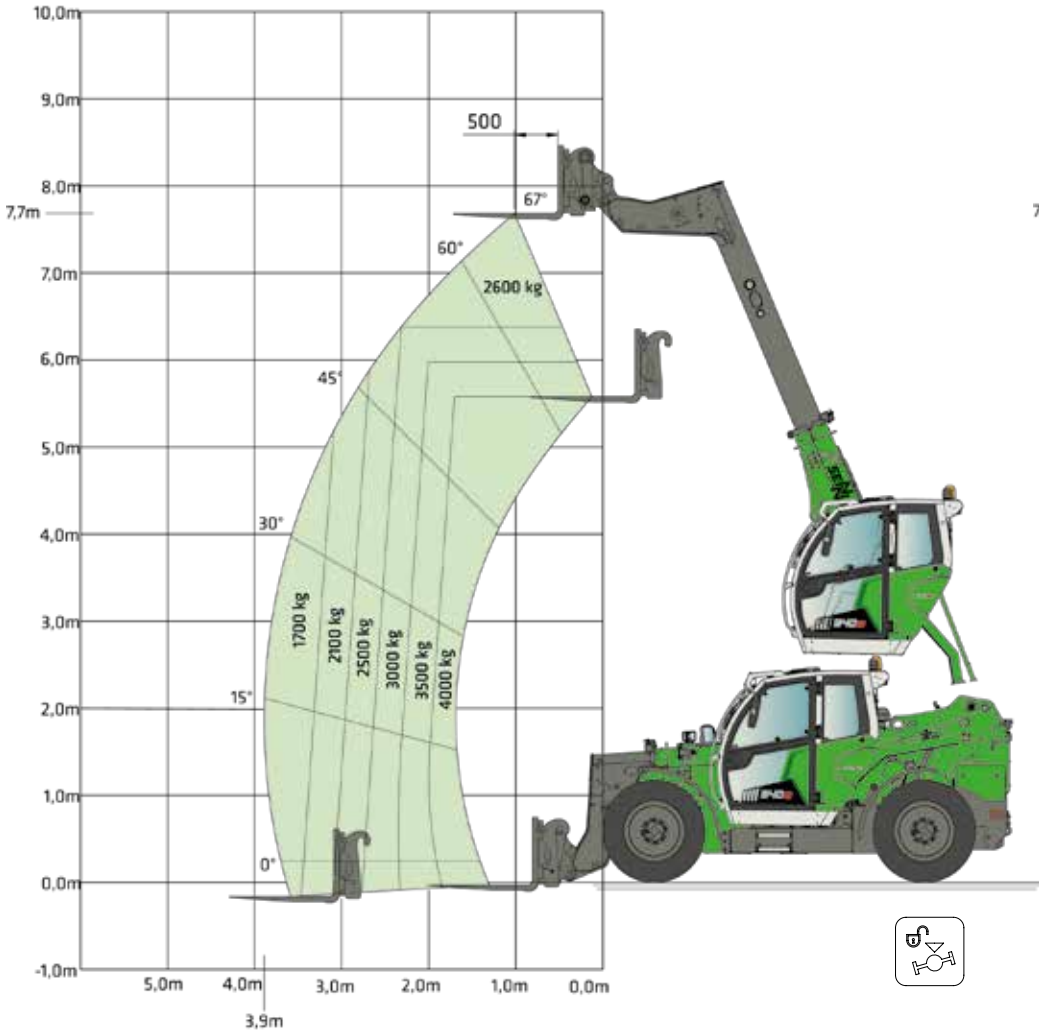
POWER TRANSMISSION	
STEERING ANGLE	36°
DIFFERENTIAL LOCK	100% selectable on the rear axle
SERVICE BRAKE	internal hydraulically operated brake
PARKING BRAKE	hydraulically operated spring-loaded cylinder

TANK CAPACITIES	
DIESEL TANK	160 l
HYDRAULIC OIL TANK	140 l
SCR TANK	16 l

1) in line with ISO 6016 (weight of the machine with all standard equipment, without a load, with a full fuel tank, with other liquid tanks full [water, hydraulic oil, brake fluid] and the weight of the operator [75 kg ± 3 kg])
2) depending on machine version
3) calculated
4) ZH = auxiliary hydraulics

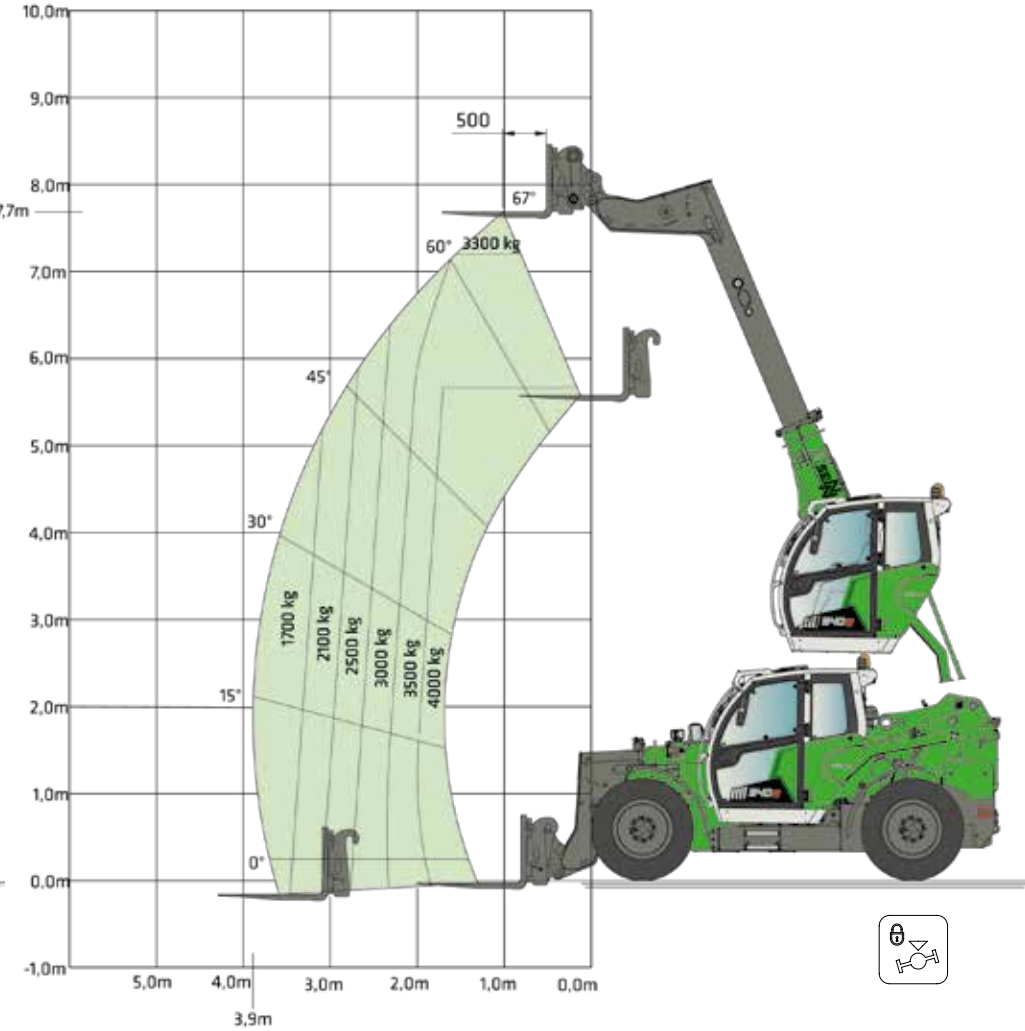
LOAD RATINGS AND OPERATIONAL RANGE

Operation with lifting fork / without oscillating axle interlock



All values according to the safety standard DIN EN 1459 / DIN ISO 22915-14.
They apply to the SENNEBOGEN standard lifting fork with a deviation of max. +/- 5° to horizontal.

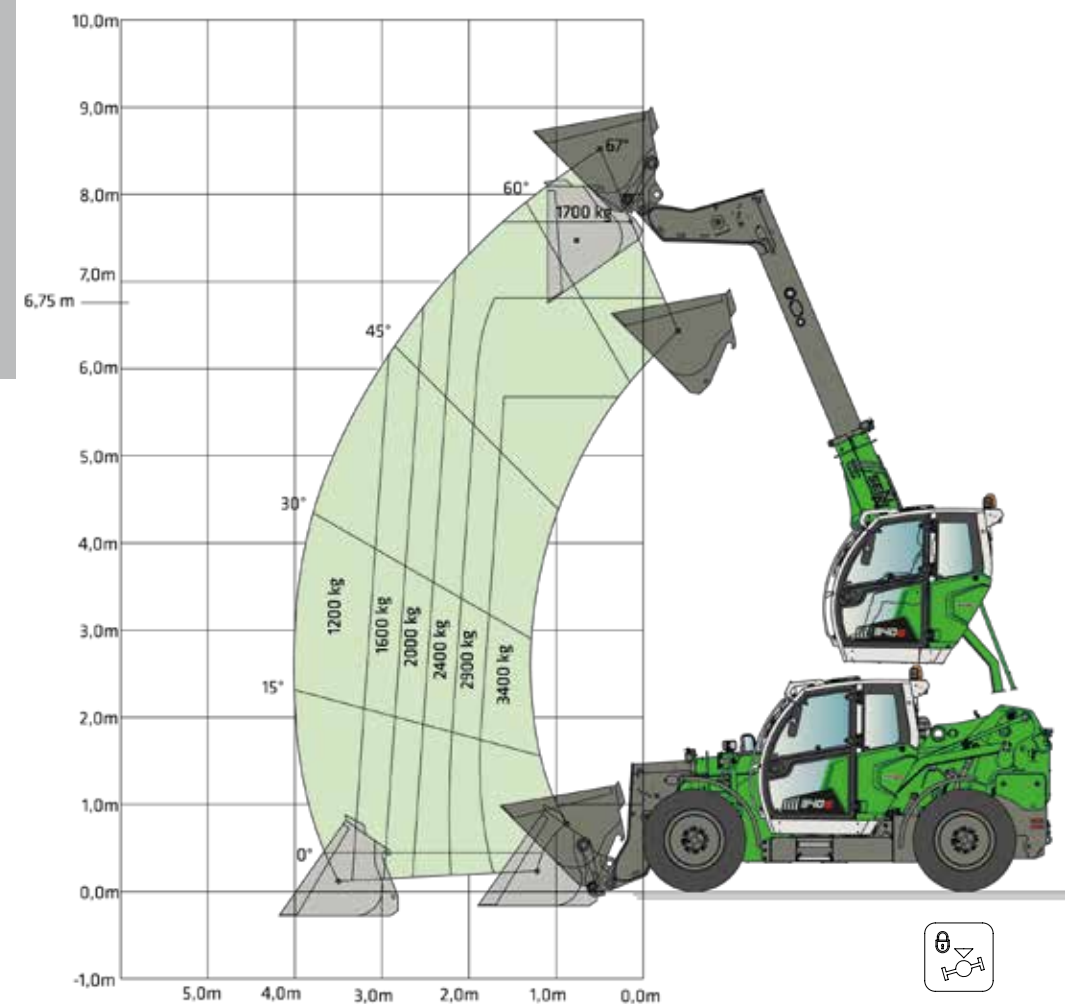
Operation with lifting fork / with oscillating axle interlock



All values according to the safety standard DIN EN 1459 / DIN ISO 22915-14.
They apply to the SENNEBOGEN standard lifting fork with a deviation of max. +/- 5° to horizontal.

LOAD RATINGS AND OPERATIONAL RANGE

Operation with shovel / with oscillating axle interlock



The specified load capacities only apply to the use of the SENNEBOGEN loading shovel with 2 m³ loading volume. The permissible bulk material densities must be taken into account. The dead weight of the shovel is included in the payload. Payloads should be moved in the transport position with the boom retracted and lowered.



**FULL POWER.
FULL VISIBILITY.**

STANDARD EQUIPMENT AND OPTIONAL EXTRAS

BASIC MODEL

340 G - SENNEBOGEN G-series telehandler (Stage V) 100 kW	●
Electric engine preheating 230 V incl. socket	○
Pre-separator for air filter, coarse particle degree of separation approx. 98 %	○
Reversible fan	●

TIRES

400/70 R24 Multimax MP 527 multi-purpose profile	●
500/70 R 24 Nokian TRI 2 Steel	○
375/85 24 Camso MPT solid rubber tires	○
VSDL D2A 15,5 R25 Bridgestone	○

EQUIPMENT

Lifting fork	○
Tine adjustment device with side thrust	○
1.1 m ³ soil shovel without teeth for bulk material density up to 1.8 t/m ³	○
3.0 m ³ bulk bucket incl. reversible blade for bulk material density up to 500 kg/m ³	○

2.5 m ³ bulk bucket incl. reversible blade for bulk material density up to 900 kg/m ³	○
1.6 m ³ loading shovel for bulk material density up to 1.2 t/m ³	○
2.0 m ³ loading shovel for bulk material density up to 1.1 t/m ³	○
1.6 m ³ loading shovel with hydr. grab and reversible blade, for bulk material density up to 1.4 t/m ³	○
2.0 m ³ loading shovel with hydr. grab and reversible blade, for bulk material density up to 1 t/m ³	○

DRIVE AND STEERING

Continuously variable travel drive 20 km/h	●
Continuously variable travel drive 40 km/h	○
Crawling function and speed limiter	○
Oscillating axle interlock, rear axle	○

TRAILER OPERATION

Shunting coupler 3 t	●
Tow bar with automatic coupling; height-adjustable	○
Compressed air brake system for towing operation	○
Socket, 7-pin, rear, for trailer operation	○

OPERATOR'S CAB AND EQUIPMENT



SENNEBOGEN Multicab IV Comfort operator's cab with roller sunblind for roof and windscreen, interior	●
Seat belt / 2 inches	●
Air-suspended comfort operator's seat with seat heating	●
Cab windscreen with safety glazing	●
Cab windshield with bullet proof glass	○
Hammer glass safety glazing for left and right cab windows incl. door	○
Skylight with safety glazing	●
Bulletproof glass in skylight	○
Wipers for skylight and rear window	○
FOPS protective guard (Stage 2)	○
Radio / USB, DAB, MP3, Bluetooth	○
Activated carbon filter for Multicab IV, 5 filter kits supplied loose	○
Hand-held fire extinguisher type PD6 (1 unit)	○
Cab lift memory function	○
Operation of the cabin lift via buttons on the control panel	○
Automatic switch-off of diesel engine via seat contact switch	○

COMPACT AND AGILE.



● standard ○ optional

STANDARD EQUIPMENT AND OPTIONAL EXTRAS

ADDITIONAL EQUIPMENT

Electric engine preheating 230 V incl. socket	○
Electric heater for hydraulic tank, 230 V	○
Pre-separator for air filter, coarse particle degree of separation approx. 98 %	○
Mirrors on right and rear	●
Camera system - basic package with 1 camera	○
Camera system - Premium package with 2 cameras	○
Central lubricating bar, easily accessible	○
Automatic central lubrication system	○
WK60-XS telescopic scale	○

HYDRAULIC OIL FILLING

Hydraulic oil Shell Tellus S2 VA 46	●
Bio oil filling (PANOLIN HLP Synth 46)	○
Hydraulic oil Shell Tellus S4 VX 32 (low temperature oil)	○

OPERATING MATERIALS WITHOUT HYDRAULIC OIL FILLING

Standard operating materials	●
Low temperature operating materials	○

EQUIPMENT

Boom damping	○
Dirt scraper for telescopic arm	○

ADDITIONAL FUNCTIONS FOR EQUIPMENT

Continuous operation ZH1/ZH3*	○
Continuous operation ZH2*	○
ZH3 Auxiliary hydraulic circuit on boom head*	○
ZH2 auxiliary hydraulic circuit at the rear*	○
Automatic shovel return	○
Socket for front attachments, 7-pin	○

LIGHTING AND TRAVEL ALERTS

2 LED lights on the basic boom	○
All-round lighting package incl. StVZO lighting (as per German road traffic licensing regulations)	○
1 flashing light on the cab	○
Headlight protective guard, front	○

QUICK-CHANGE SYSTEM

SENNEBOGEN quick-change device – hydraulic	●
KRAMER quick-change device	○
JCB quick-change device	○
Manitou quick-change device	○
Volvo quick-change device	○

EU TYPE-APPROVAL

EU type-approval according to Regulation (EU) No 167/2013	○
Vehicle class: T1a	

PAINT FINISH / COATING

Standard paint RAL 6018 Green / RAL 7038 Light gray / RAL 7022 Gray	●
Special paint finish (1 color) in RAL color	○
Special paint finish for Multicab only in RAL color	○

SENTRACK TELEMETRY SYSTEM

SENtrack telemetry system including connection fees	●
---	---

POWERFUL WORK HYDRAULICS

Powerful drive, economical consumption

Each work function always receives the hydraulic power it requires to operate optimally. Instantaneous signal processing between joystick and main control block ensures sensitive and responsive operation for all the machine's hydraulic functions.

In addition to the main functions – the lift cylinder, tilt cylinder, telescopic cylinder and the elevating cab – the work hydraulics also control the additional hydraulic connections just as effectively.



EQUIPPED FOR MANY USES



Auxiliary hydraulics 1 (ZH1)
For quick and easy connection of attachments (standard)



Pressure relief for ZH1
Clean and safe attachment change mechanically at the push of a button (standard)



Continuous operation of ZH1/ZH2
Variable oil quantity adjustable on the membrane keypad (optional)



4-pin socket (24 V)
for front attachments on the quick release system (optional)

Additional auxiliary hydraulics ZH2
rear hydraulic connection for trailer or similar (optional)

Auxiliary hydraulics ZH3
For the operation of demanding attachments with several hydraulic functions (optional)

● standard ○ optional

* ZH = auxiliary hydraulics

SHOVELS

With SENNEBOGEN shovels, you get attachments specially optimized for our telehandler, which match the machine's high quality standards.

Our shovels are designed for the tough working conditions of the recycling industry. The robust design with highly wear-resistant materials and hardened components, and the shape and center of gravity optimization, offer ideal conditions for long-term continuous loads.

Unleash the full potential of our telehandler with SENNEBOGEN shovels:

- ✓ Utilization of maximum break-away force and payload
- ✓ Lower fuel consumption
- ✓ Reduced drive train load
- ✓ Shorter loading cycles
- ✓ Greater working comfort and safety with the hold-down shovel



SOIL SHOVEL

1.1 m³ soil shovel without teeth

Bulk material density: up to 1.8 t/m³

Shovel weight: approx. 580 kg



LOADING SHOVEL

1.6 m³ loading shovel for bulk material density up to 1.2 t/m³, shovel weight approx. 590 kg

2.0 m³ loading shovel for bulk material density up to 1.1 t/m³, shovel weight approx. 650 kg



HOLD-DOWN SHOVEL

1.6 m³ loading shovel with hydr. Grab and reversible blade, for bulk material density up to 1.4 t/m³, shovel weight approx. 1.2 t

2.0 m³ loading shovel with hydr. Grab and reversible blade, for bulk material density up to 1 t/m³, shovel weight approx. 1.25 t



LIGHT-GOODS SHOVEL

2.5 m³ bulk shovel incl. reversible blade for bulk material density up to 900 kg/m³, shovel weight approx. 790 kg

3.0 m³ bulk shovel incl. reversible blade for bulk material density up to 500 kg/m³, shovel weight approx. 840 kg

Subject to technical changes. Additional options available upon request.

TIRES

No matter what the application, it's the ground that forms the contact surface with the machine, and so only the right tires can provide optimum safety.

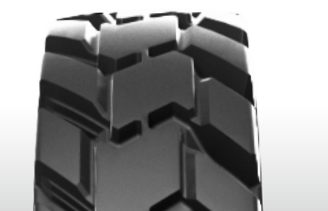
We will provide you with the best tires for your application. Rely on our experience and get advice on achieving the best performance, safety and service life.



INDUSTRY

NOKIAN TRI 2 STEEL
500/70 R24

MPT steel reinforced profile for industrial and recycling plants



RECYCLING

CAMSO MPT 793S
375/85-24

Solid rubber tires
12.00-24. Width approx. 300 mm



STANDARD

BKT MULTIMAX MP 527
400/70 R24

Universal multi-purpose tires with first-class traction for agro-industrial applications



OFFROAD

15,5 R25 BRIDGESTONE
VSDL D2A

Extremely robust LS pneumatic tires for maximum protection e.g. in scrap yards, quarries or for tough recycling applications



Recycling tires

Subject to technical changes. Additional options available upon request.

LONG WHEELBASE.
HIGH STABILITY.

HIGH MANEUVERABILITY
AND LONG WHEELBASE

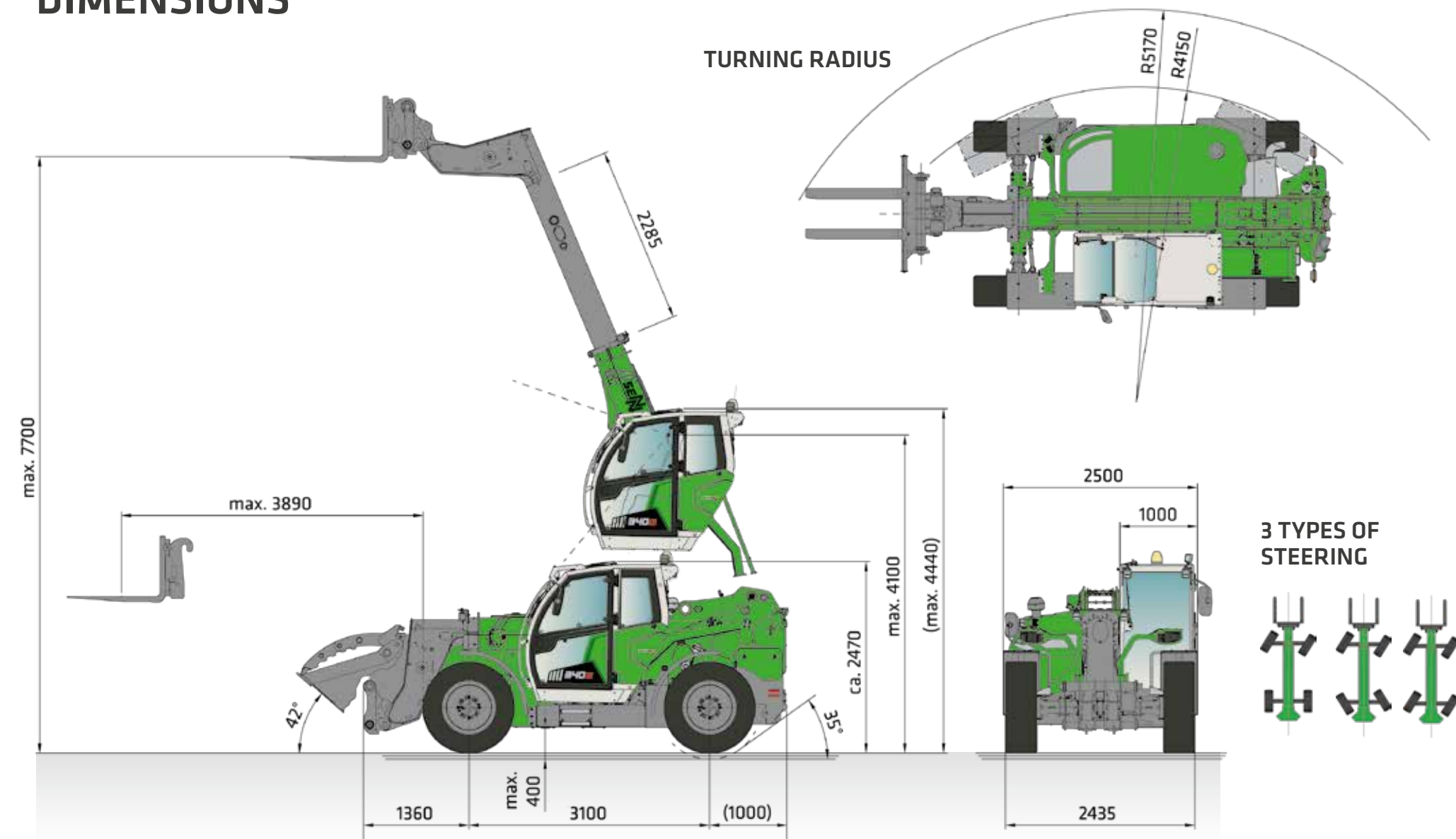


This video shows you
how surprisingly agile
our telehandler is.

→ [www.sennebogen.com/news/videos/
340-g-serie-hohe-wendigkeit-und-langer-radstand](http://www.sennebogen.com/news/videos/340-g-serie-hohe-wendigkeit-und-langer-radstand)



DIMENSIONS



Measurements in [mm] **CLASSIFICATION:** Off-road forklift with variable reach - DIN EN 1459
Subject to technical changes. Additional options available upon request.

YOUR MACHINE. MULTI-FUNCTIONAL.

The SENNEBOGEN 340 G is a true all-rounder. In addition to suitable shovels and mechanical or hydraulic pallet forks, it can also operate many other attachments.

With the auxiliary hydraulics and the electrical connection a wide range of useful tools can be operated safely and with sufficient power.

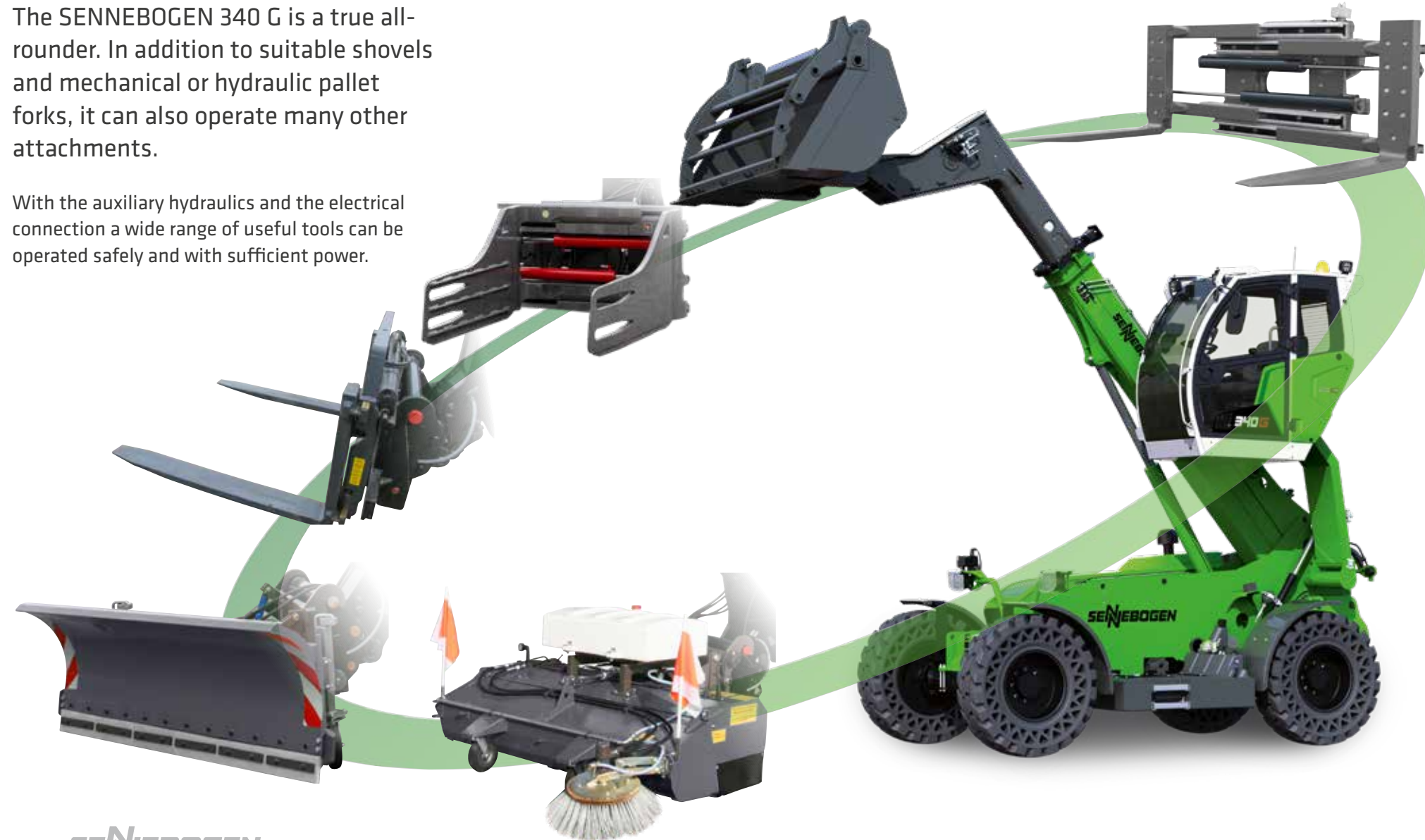


Image shows a selection of possible attachments. Availability on request. Subject to technical changes. Additional options available upon request.

SERVICE: KEEP IT SIMPLE. WITH MANAGEABLE TECHNOLOGY.



Clear control panel and display console incl. error code display.



Spacious access to the engine compartment with just one handle. The side plate of the engine nacelle can also be removed.



Our service center offers you comprehensive technical support in the maintenance and repair of your machine – by telephone and on site.

OUR SERVICE PHILOSOPHY.



Reliable and practical technology makes life easier. We rely on hydraulics, electrics and electronics where they are most useful.



We make you happy, not reliant. With cost-effective components and fewer process steps, you can take care of the machine on your own.



The central electrical distributors and electronic modules facilitate maintenance, service and, if necessary troubleshooting.

EXTENDED WARRANTY

SENNEBOGEN guarantees the steel components of the 340 G (in particular the frame and telescopic arm) for **three years** or **10,000 operating hours**, whichever comes first. Talk to your sales partner about this offer!

IT'S ALL ABOUT MAINTENANCE. SIMPLE AND UNDERSTANDABLE.



MAINTENANCE AND SERVICE MADE EASY



Clearly arranged and
easily accessible
components.

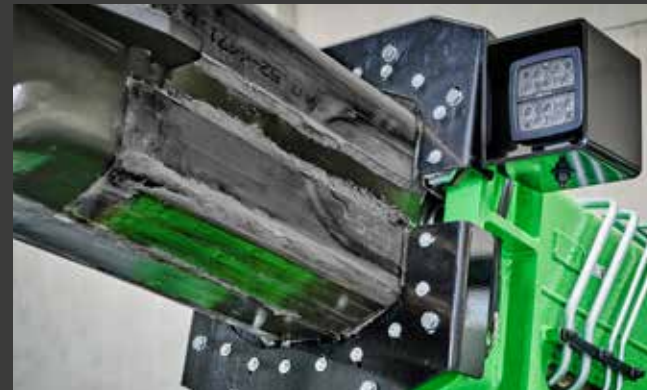
➔ <https://www.sennebogen.com/news/videos/340-g-serie-hohe-servicefreundlichkeit-und-zuverlaessige-technik>



1 All service points easy to access thanks to transversely mounted engine.



2 Very good access to the cooler thanks to folding air conditioning condenser.



3 Telescopic boom slide guides are accessible from the outside – easy to maintain and long service life.



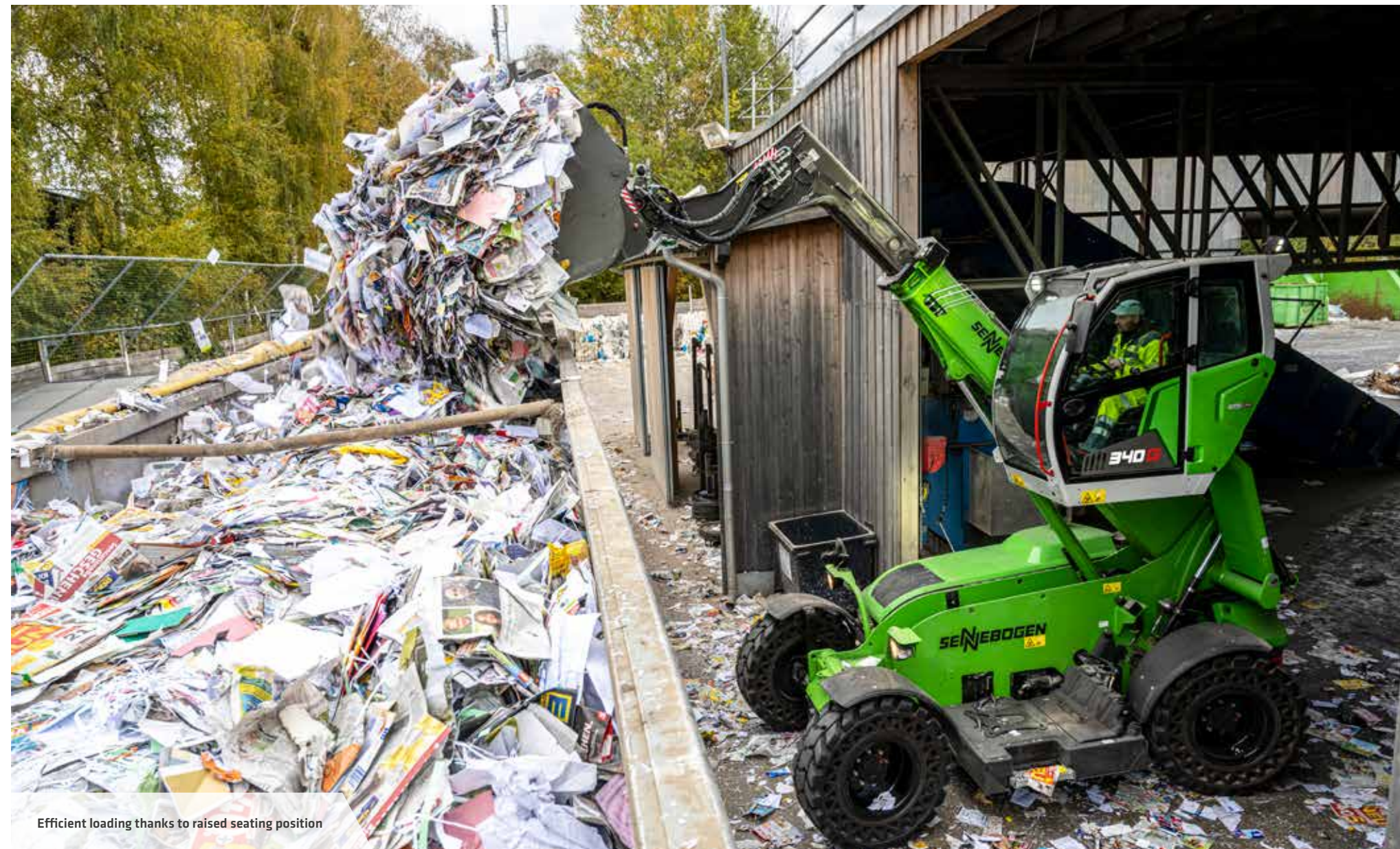
4 The pipes leading inwards are optimally protected from damage by the boom and ensure a safe supply of hydraulic oil.



5 The central lubrication system guarantees an extended service life of the machine through continuous and automated lubrication cycles.



6 Best possible access to the control block.





SENNEBOGEN ACADEMY

Increase your knowledge because success is based on knowledge. In the SENNEBOGEN Academy, we place great importance on ensuring knowledge flows powerfully.

➔ www.sennebogen-academy.com



SERVICE AND MAINTENANCE

Comprehensive customer service. And supply of spare parts. Service is a TOP priority for us.

➔ www.sennebogen.com/customer-service



SENtrack

Efficient fleet management with SENtrack: Use information that would otherwise stay hidden and increase your efficiency:

➔ www.sennebogen.com/sentrack



RENTAL & USED

Discover the unique range of rental machines available from SENNEBOGEN Rental & Used. Find your rental machine here:

➔ www.sennebogen-rental-used.com

JOIN OUR OPERATORS' CLUB



The spotlight is on you and your machine! We focus on exclusive information, sharing experiences with other SENNEBOGEN operators as well as fun and enthusiasm.

➔ See all the benefits at

www.sennebogen.com/operators-club



MOVE BIG THINGS – WITH US!



Telehandler
4-5.5 t

Balancer
130-300 t

Material handler
17-420 t

Duty cycle crane
13.5-300 t

Crawler crane
50-300 t

Telescopic crane
16-130 t

Port crane
300 t

over **70**
years of experience

100 %
family company

over **1800**
experienced
specialists worldwide

over **180**
sales and service partners
worldwide

4
production plants
in Germany

over **60**
different
machine types

This catalog describes machine models, the scope of equipment of individual models, and configuration options (standard equipment and optional equipment) of the machines delivered by SENNEBOGEN Maschinenfabrik GmbH. Machine illustrations may contain optional and supplementary equipment. Actual equipment may vary depending on the country to which the machines are delivered, especially in regard to standard and optional equipment and tolerances. All product designations used may be trademarks of SENNEBOGEN Maschinenfabrik GmbH or other supplying companies, and any use by third parties for their own purposes may violate the rights of the owners.

Please contact your local SENNEBOGEN sales partner for information concerning the equipment variants offered. Requested performance characteristics are only binding if they are expressly stipulated upon conclusion of the contract. Delivery options and technical features are subject to change. All information is supplied without liability. Equipment is subject to change, and rights of advancement are reserved. © SENNEBOGEN Maschinenfabrik GmbH, Straubing, Germany. Reproduction in whole or in part only with written consent of SENNEBOGEN Maschinenfabrik GmbH, Straubing, Germany.



SENNEBOGEN
Maschinenfabrik GmbH
Hebbelstraße 30
94315 Straubing, Germany

➔ www.sennebogen.com

MOVE BIG THINGS

SALES SENNEBOGEN

Multi Line Sales

☎ +49 (0) 9421 / 540 - 547

✉ telehandler@sennebogen.com

SPARE PARTS CENTER

Spare parts orders

✉ spareparts@sennebogen.de

AFTER SALES

Technical support

✉ service@sennebogen.de