

SENEBOGEN



164 kW (Stage IIIa)

168 kW (Stage V)



45 t



17 m



MAXCAB

830E

Demolition machine

Stage V

830E Advanced. The E-Series



1980: S214 with dual cylinder

What makes up the E-Series

- 65 years of experience in designing and constructing hydraulic material handling machines
- Uncompromisingly high performance in all areas: Focus on material handling
- Technology that can be mastered: High-quality components without over-engineering
- Long service life and high value retention

Your top benefits

1

Green Efficiency

Save fuel - reduce operating costs
Work quietly - protect operator and environment



2

Top-level performance

Durable mechanical systems - stressed parts optimized
High speeds - high load capacities

3

Maximum usability

Maxcab comfort cab - work in comfort
SENCON - work program selection made easy



4

Maximum safety

Safe entry and exit - non-slip steps
State-of-the-art cameras - entire work area in view

5

Maintenance and service made easy

SENNEBOGEN control system - easy diagnosis
Simple maintenance - clear labeling

6

Consultation and support in your area

3 production sites - 2 subsidiaries
150 sales partners - over 350 service stations





830E The E-Series. At a glance.



Four ways to save fuel

- Savings of up to 20 %: Work in EcoMode with reduced engine speed
- Idle automation reduces speed to 40 % of operating speed
- Stop automation switches the engine off when not needed
- Optimized engine settings, reduced specific fuel consumption, state-of-the-art exhaust after treatment



Quiet operation 3

- Consistently quiet operation thanks to decoupled engine mounts and sound proofing in the doors
- Sound power level in accordance with 2000/14/EC as much as 2 dB lower than required

High-capacity cooling 4

- Constant, reliable performance thanks to large-scale, robust fans and coolers
- Water and oil coolers with top-notch efficiency thanks to axial-piston pump and engine control and on-demand thermostatic control
- Fan reversal for cleaning in series



30°tiltable cab **1**

Maximum safety **2**

- Non-slip work surfaces
- 2 cameras to the right and rear
- Platform with railing next to cab sliding door
- Protective grating, windshield/roof

Powerful hydraulic system **5**

- Strong pumps with power reserves
- Top efficiency thanks to large-scale hydraulic valves and lines
- Extra-long change intervals of 4,000 operating hours through initial fill-up with special oil with extended service life when using SENNEBOGEN HydroClean*

3.00 m - 4.50 m
telescopic
crawler undercarriage

Subject to technical changes. Additional options available upon request.



The premium cab.

Panoramic view

Features

- optimum cab climate with automatic air conditioning system, partial tinted glass
- pleasant and equal temperature dispersion by means of 9 nozzles
- panoramic view
- comfort seat with air suspension
- very quiet through optimized noise insulation
- highest safety & comfort with sliding door, wide door opening
- ergonomically arranged operating controls for fatigue-free and relaxed working
- 12 V, 24 V, and USB charging sockets, hands-free telephone preparation, document box
- various options: electric cool box behind driver's seat, seat air conditioning

SENNEBOGEN-Joysticks

- Joysticks on resonant, seat-mounted consoles
- Comfortable grip thanks to ergonomic design
- Shortcuts for direct and sensitive control of all functions
- Quicker access thanks to optimized design of buttons and switches

830E Maintenance and service made easy.



Optimized for maintenance

- Fast and easy diagnosis thanks to the clearly labeled electrical distributor
- Easy access to all the machine's service points
- Automatic central lubrication for equipment and live ring track



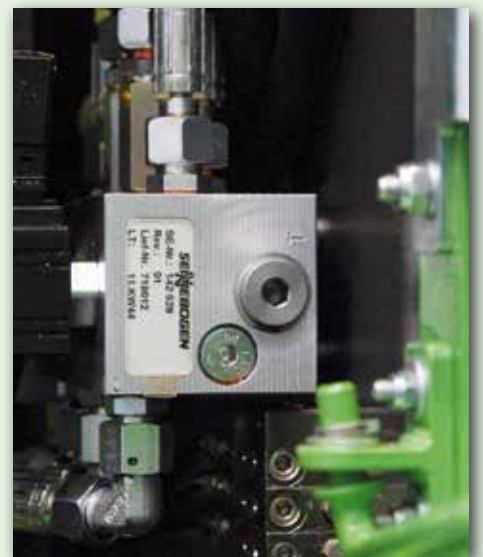
SENNEBOGEN HydroClean*

- Optimal protection of hydraulic components thanks to 3 µm micro-filter
- Cleaner hydraulic oil, extended oil service life



Central measuring points

- Easily accessible
- Quick inspection of the entire hydraulic system

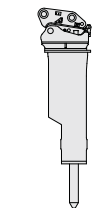


Clear labeling

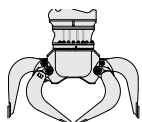
- All parts labeled with a unique part number
- Easy and reliable spare parts ordering

830E Modular construction

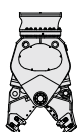
Attachments



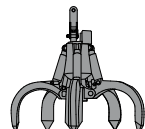
Demolition hammer



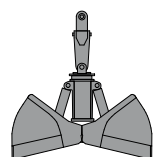
Demolition grab



Demolition shears



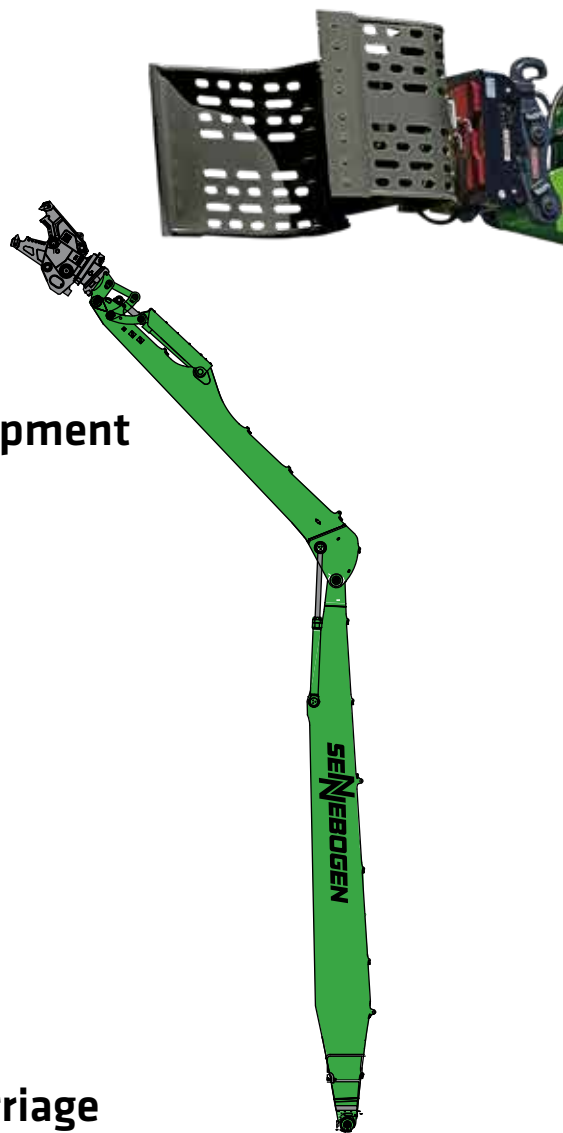
Orange peel grab



Clamshell grab

Demolition equipment

18 m reach with :
10.5 m compact boom
+ 7.1 m ULM stick



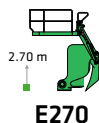
Cab

Cab elevation



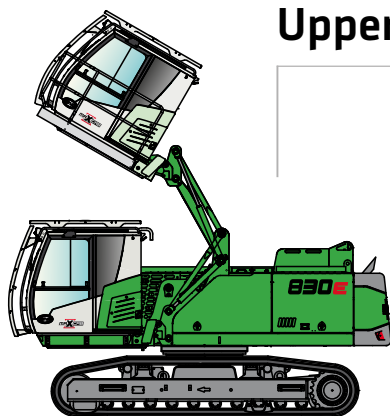
Maxcab

Tiltable 30°
Elevation 2.70 m



E270

Uppercarriage



Diesel-hydraulic drive

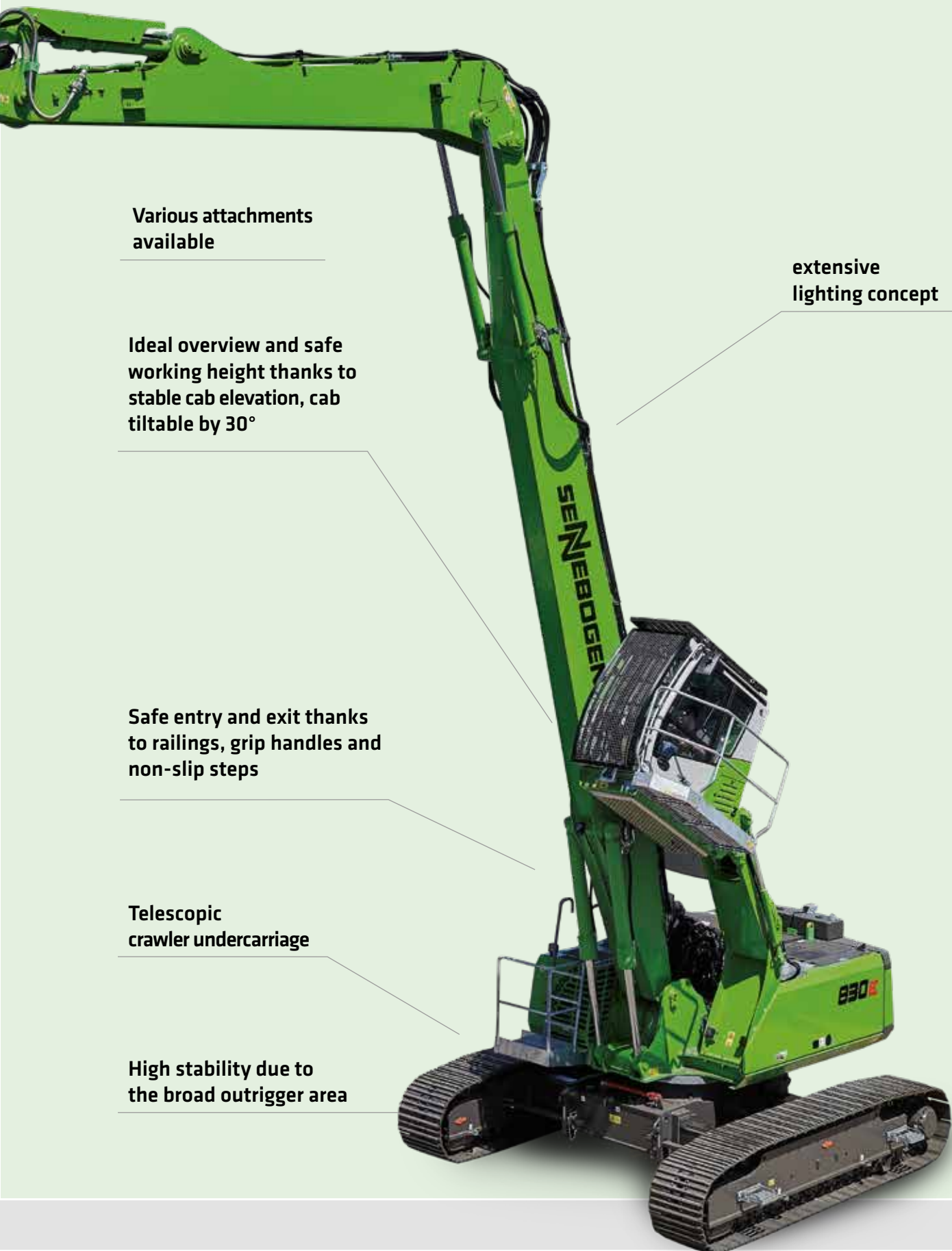


Electrohydraulic drive

Undercarriage

telescopic

830E Advantages at a glance



Various attachments
available

Ideal overview and safe
working height thanks to
stable cab elevation, cab
tiltable by 30°

extensive
lighting concept

Safe entry and exit thanks
to railings, grip handles and
non-slip steps

Telescopic
crawler undercarriage

High stability due to
the broad outrigger area

830E Technical data, equipment

MACHINE TYPE

Model (type) **830**

ENGINE

Power	Stage V: Rated power: 168 kW at 2200 min ⁻¹ 186 kW at 2000 min ⁻¹ / 188 kW at 1900 min ⁻¹ Stage IIIa: Rated power: 164 kW at 2000 min ⁻¹ 172 kW at 1800 min ⁻¹
Model	Cummins 6.7 direct injection, turbo charged, charge air cooler, reduced emissions, Eco mode, idle automation, stop automation
Cooling	water-cooled
Diesel filter	with water separator and heater
Air filter	Dry filter with integrated pre-separator, automatic dust discharge, main element and safety element, contamination indicator
Fuel tank	450 l
DEF tank	45 l
Electr. system	24 V
Batteries	2 x 150 Ah , main switch
Options	<ul style="list-style-type: none"> ■ Engine block preheating for temperatures below -20°C ■ Electric fuel pump ■ Jump start pole

UPPERCARRIAGE

Design	Torsion-resistant box design, precision crafted, steel bushings for boom mounting. Very service-friendly design, engine installed in the longitudinal direction
Central lubrication	Automatic central lubrication for equipment and slewing gear
Electrical system	central electrical distributor, battery disconnect switch
Cooling system	3-circuit cooling system with high cooling output, thermostatically regulated fan drive for oil cooler and water cooler, fan reversal for cleaning
Options	<ul style="list-style-type: none"> ■ Swing gear brake via foot pedal ■ Uppercarriage railings for additional safety ■ LED lighting package ■ Fire extinguisher ■ Electric heater for hydraulic tank ■ Low temperature packages

Options

- Hydraulically-driven magnetic generator 15 kW / 20 kW
- SENtrack DS telematic system

HYDRAULIC SYSTEM

Load-sensing / LUDV hydraulic system for hydraulically operated work functions	
Pump type	Swash plate-type variable-displacement piston pump, load pressure-independent flow distribution for simultaneous, independent control of work functions
Pump control	Zero-stroke control, on-demand flow control – the pumps only pump as much oil as will actually be used, pressure purging, load limit control
Flow rate	520 l/min
Operating pressure	max. 350 bar
Filtration	High-performance filtration with long change interval
Hydraulic tank	310 l
Control system	Proportional, precision hydraulic actuation of work movements, 2 hydraulic servo joysticks for the work functions, additional functions via switches and foot pedals
Safety	Hydraulic circuits with safety valves, secured emergency lowering of the equipment at engine standstill, pipe fracture safety valves for lift cylinder and stick cylinder
Options	<ul style="list-style-type: none"> ■ Bio-oil – environmentally friendly ■ Tool Control for programming pressure/rate of up to 10 tools ■ Supplementary hydraulic circuit for shear attachment ■ Load torque warning with capacity display ■ Overload safeguard with shutdown ■ 3 µm hydraulic micro-filter - SENNEBOGEN HydroClean

SLEWING DRIVE

Gearbox	Compact planetary gear with bent-axis hydraulic engine, integrated brake valves
Parking brake	Spring-loaded multi-disk brake
Slewing ring	Strong slewing ring, sealed
Slewing speed	0-8 min ⁻¹ , variable

830E Technical data, equipment



CAB



Cab elevation	E270, hydraulically elevating cab, tiltable 30 °
Cab equipment	Sliding door inc. sliding pane, vibration damped, tinted safety glass, front pane can be opened, roof window, windscreen wiper for front pane, radio preparation, air-suspended comfort seat, joystick steering, SENNEBOGEN SENCON control & diagnosis system

Options	<ul style="list-style-type: none"> ■ Maxcab Industry ■ Armored-glass windshield ■ Armored-glass sunroof ■ Safety side window and rear window ■ Windscreen wiper for front window/skylight ■ Rolling shade for roof window and windshield ■ FOPS protective roof guard ■ Protective front guard ■ Charcoal filter for circulating and outside air ■ Auxiliary heating ■ Climatic seat ■ Radio ■ Electric cool box
---------	---



EQUIPMENT

Design	Decade-long experience, most advanced computer simulation, the greatest degree of stability and longest service life, large-scale mounting points and precision-crafted sealed low-maintenance special bushings, quick change couplings for connecting/removing/turning grabs
Cylinders	Hydraulic cylinders with high-quality sealing and guide elements, end position damping, sealed mounting points

Options	<ul style="list-style-type: none"> ■ Ball valves in the grab hydraulic lines ■ Hoisting limiter / stick limitation adjustable for stop settings, e.g. in the hall ■ Multi-coupling
---------	---



UNDERCARRIAGE

Design	Wide-gauge crawler undercarriage in stable, torsionally rigid box construction
Drive	Hydraulic travel drive
Parking brake	Spring-loaded, hydraulically ventilated disk brakes, hydraulic brake valves
Traveling gear	T41/380 telescopic crawler undercarriage with hydraulic or mechanical track adjustment of 2.3 - 3.8 m
Speed	0 - 1.6 km/h Stage I, 0 - 3 km/h Stage II



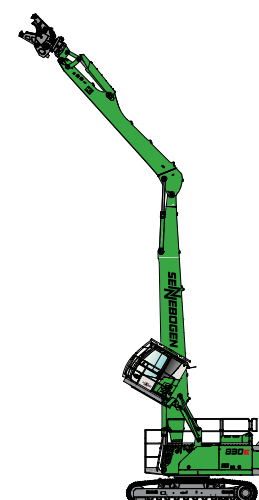
ELECTRIC DRIVE

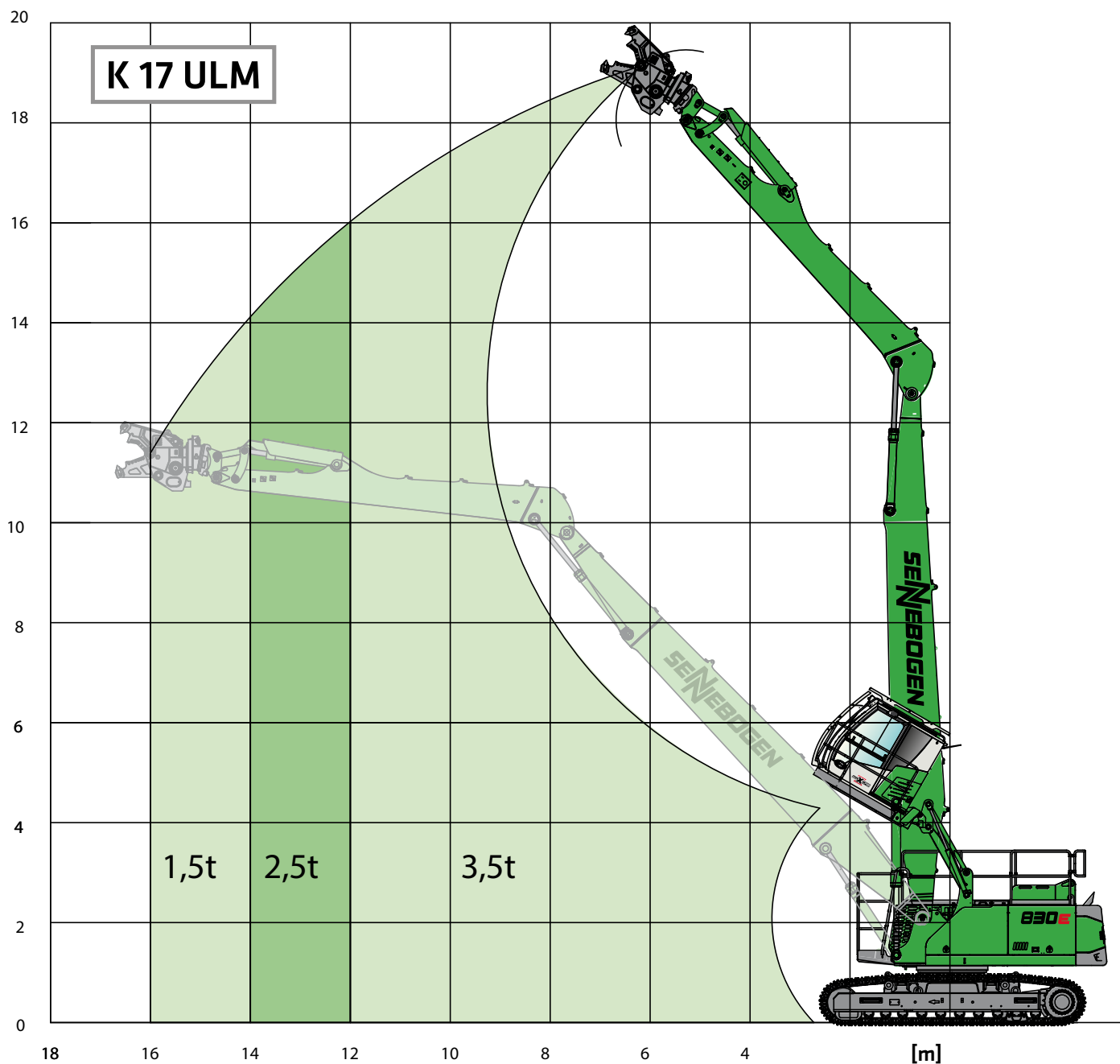
Option	<ul style="list-style-type: none"> ■ Power: 132 kW / 400 Volt / 50 Hz Total connected load 250 kVA ■ Option: 160 kW / 400 Volt / 50 Hz Total connected load 270 kVA machine side fuse 315 A (alternatively 355 A with magnet system) for 400 V - via star-delta circuit ■ Advantages: Lowest operating costs, low-noise and almost vibration-free work, long service life of the hydraulic components
--------	--



OPERATING WEIGHT

Mass	830 R with T41/380 hydraulic telescopic crawler undercarriage and K17 equipment and attachment approx. 45,000 kg
Note	Operating weight varies with equipment.





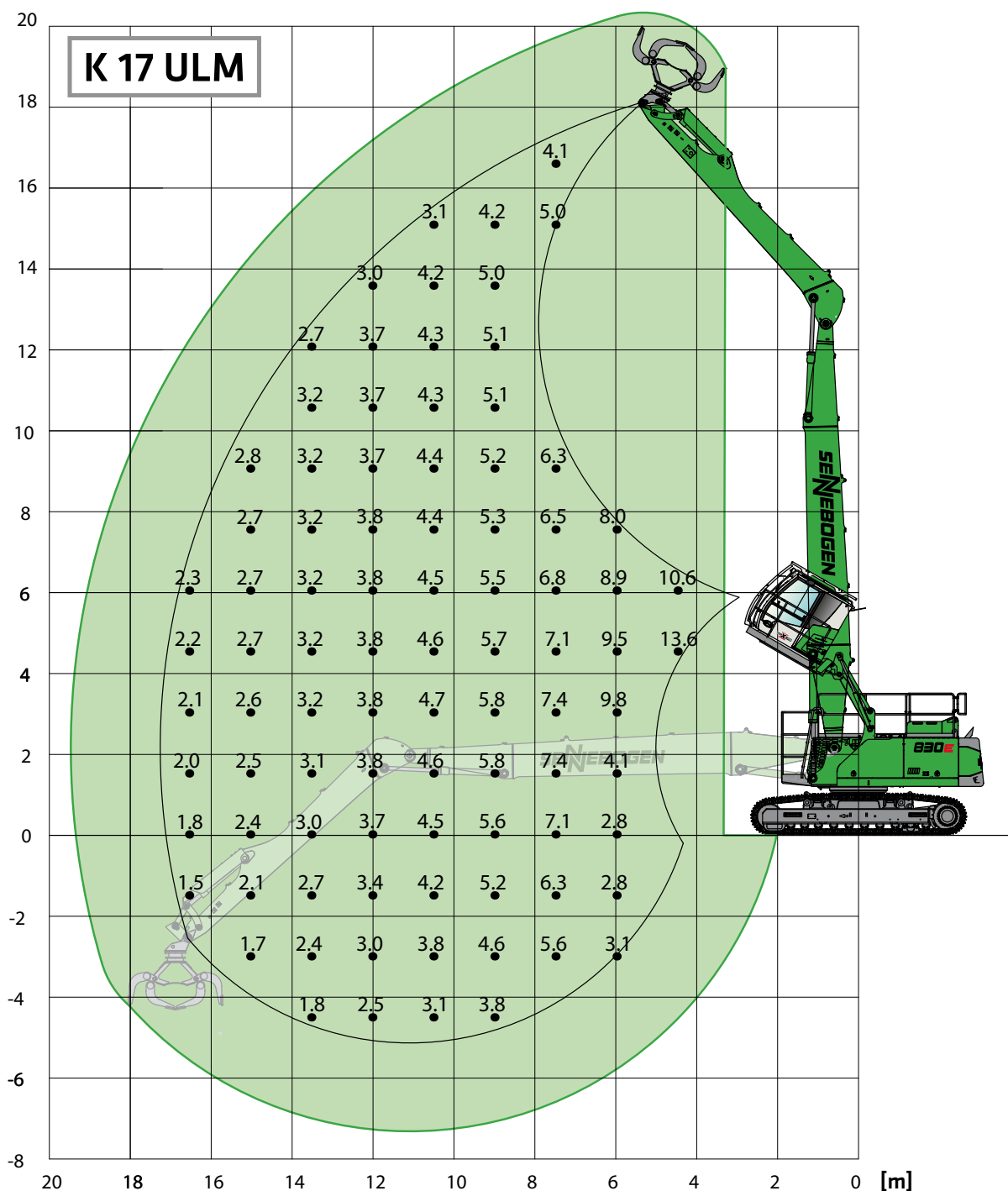
Undercarriage: T41/380

Compact boom: 10.5 m

Cab: E270 Maxcab, hydraulically elevating, tiltable by 30°

Grab stick: 7.1 m

All load ratings are specified in tons (t) and apply at the end of the stick, without attachment, on solid, level ground. Attachments such as grabs, magnets, load hooks, etc. are part of the specified load ratings. The specified values are 75% of the static tipping load or 87% of the hydraulic lifting force in accordance with ISO 10567. In accordance with EU standard EN 474 / 5, hydraulic material handling machines used for hoisting must be equipped with pipe fracture safety devices on the hoist and stick cylinders and an overload warning device. Load ratings apply to max. gauge and they are 360° slewing.



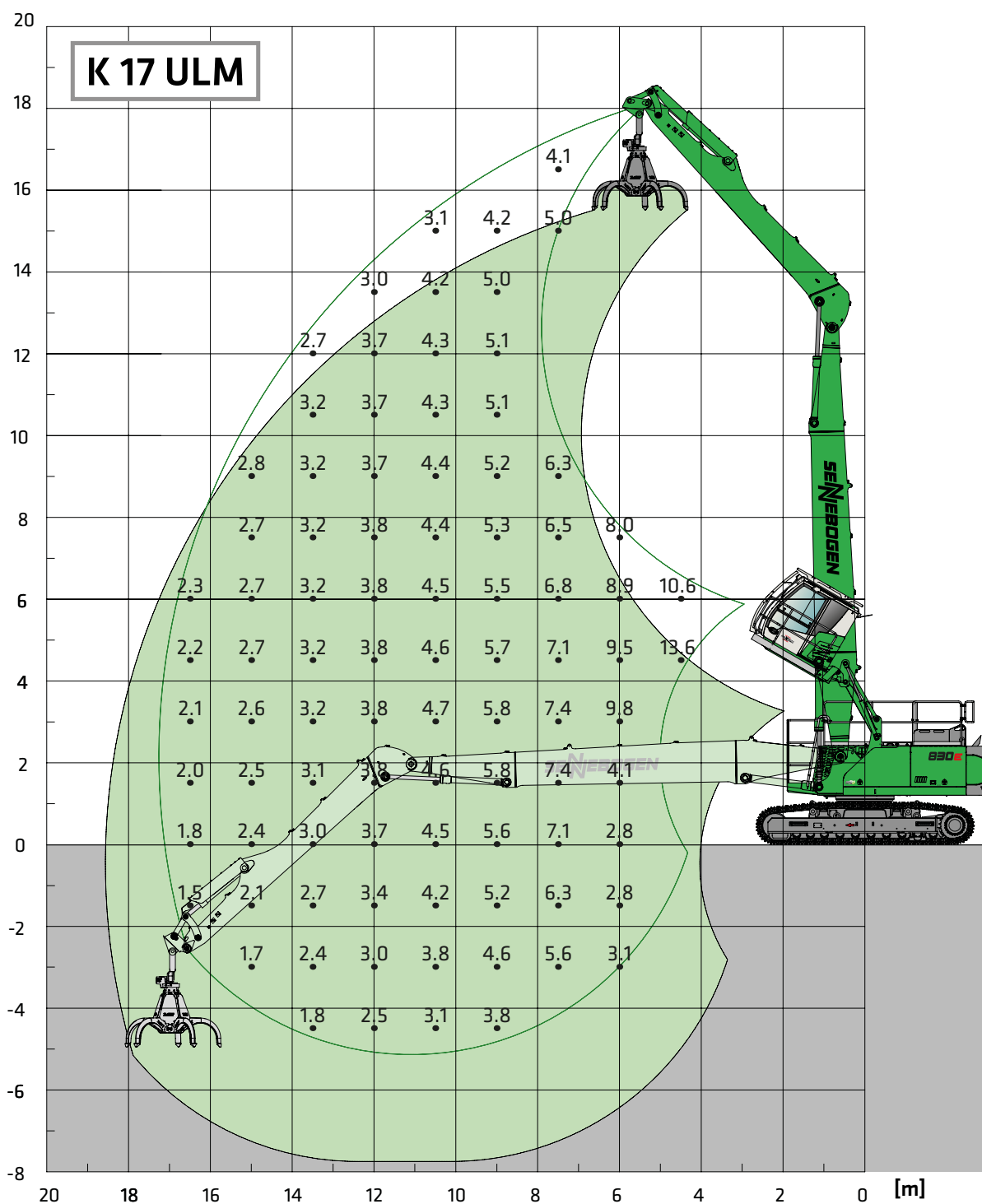
Undercarriage: T41/380

Compact boom: 10.5 m

Cab: E270 Maxcab, hydraulically elevating, tiltable by 30°

Grab stick: 7.1 m

All load ratings are specified in tons (t) and apply at the end of the stick, without attachment, on solid, level ground. Attachments such as grabs, magnets, load hooks, etc. are part of the specified load ratings. The specified values are 75% of the static tipping load or 87% of the hydraulic lifting force in accordance with ISO 10567. In accordance with EU standard EN 474 / 5, hydraulic material handling machines used for hoisting must be equipped with pipe fracture safety devices on the hoist and stick cylinders and an overload warning device. Load ratings apply to max. gauge and they are 360° slewing.



Undercarriage: T41/380

Compact boom: 10.5 m

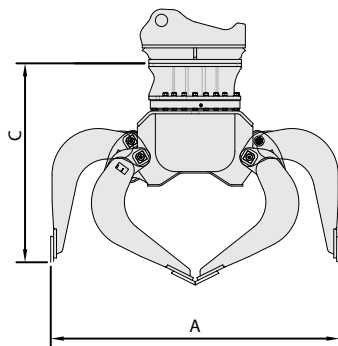
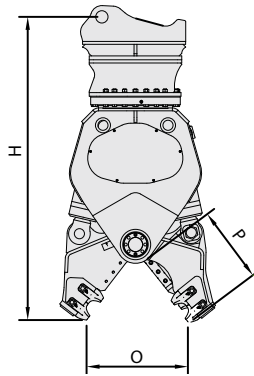
Cab: E270 Maxcab, hydraulically elevating, tiltable by 30°

Grab stick: 7.1 m

All load ratings are specified in tons (t) and apply at the end of the stick, without attachment, on solid, level ground. Attachments such as grabs, magnets, load hooks, etc. are part of the specified load ratings. The specified values are 75% of the static tipping load or 87% of the hydraulic lifting force in accordance with ISO 10567. In accordance with EU standard EN 474 / 5, hydraulic material handling machines used for hoisting must be equipped with pipe fracture safety devices on the hoist and stick cylinders and an overload warning device. Load ratings apply to max. gauge and they are 360° slewing.

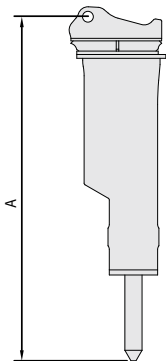
Pulveriser

Description	Weight (kg)	H (mm)	Ø (mm)	P (mm)
CD 015 BB-A	1470	2050	710	530



Demolition grab

Description	Weight (kg)	Length (mm)	A (mm)	B (mm)	C (mm)
S1402	1220	1010	2000	1046	616



Demolition hammer

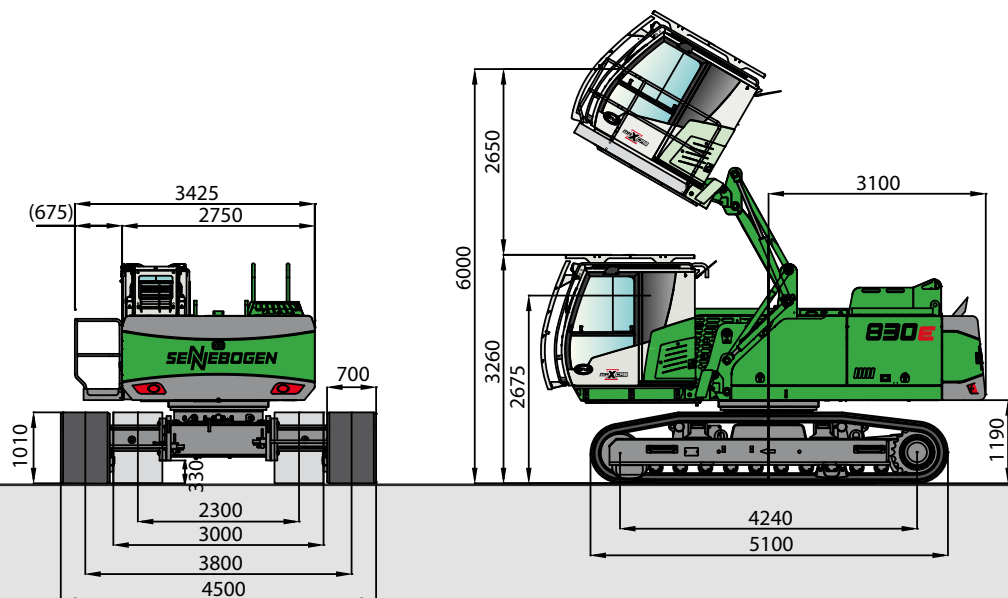
Description	Weight (kg)	Ø (mm)	A (mm)
AB 1853	1800	135	2700

Stick-mounted hydraulic performance data

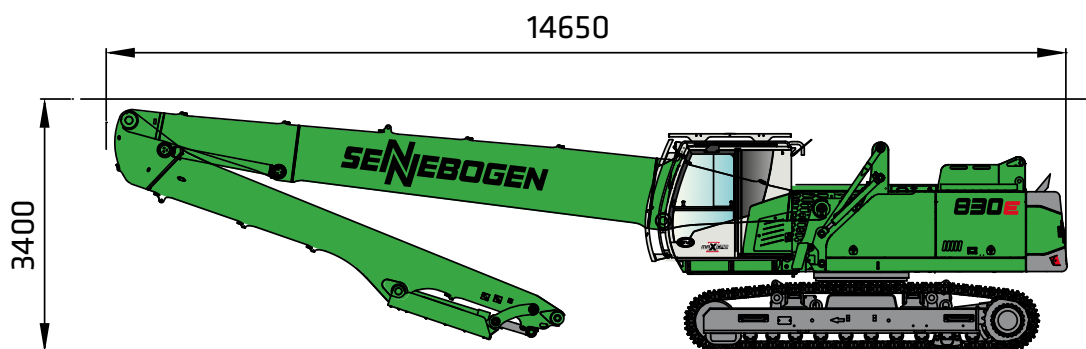
- AUF/ZU tool up to 385 lt./min./ 350 bar
- Set quantity and pressure via the tool control
- Tool ROTATION
- Hammer vent / return line (option)
- Operate hydraulic quick change (option)

The tools depicted should serve as an example of the potentially suitable sizes. Customers will make their own tool selection.

830E Dimensions

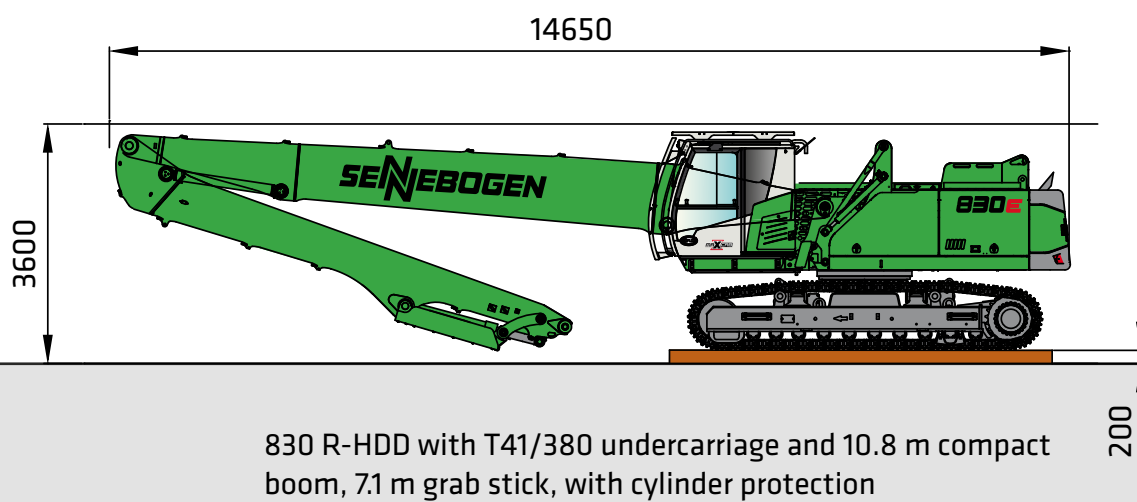


830 R-HDD with T41/380 undercarriage and hydraulically elevating Maxcab, tiltable by 30°



830 R-HDD with T41/380 undercarriage and 10.8 m compact boom, 7.1 m grab stick, with cylinder protection

830E Dimensions



830E



Optimum protection
for ULM cylinder



Cab
series standard 30° tilt, protective guard
and underbody protection panel made of
rifflated sheet metal

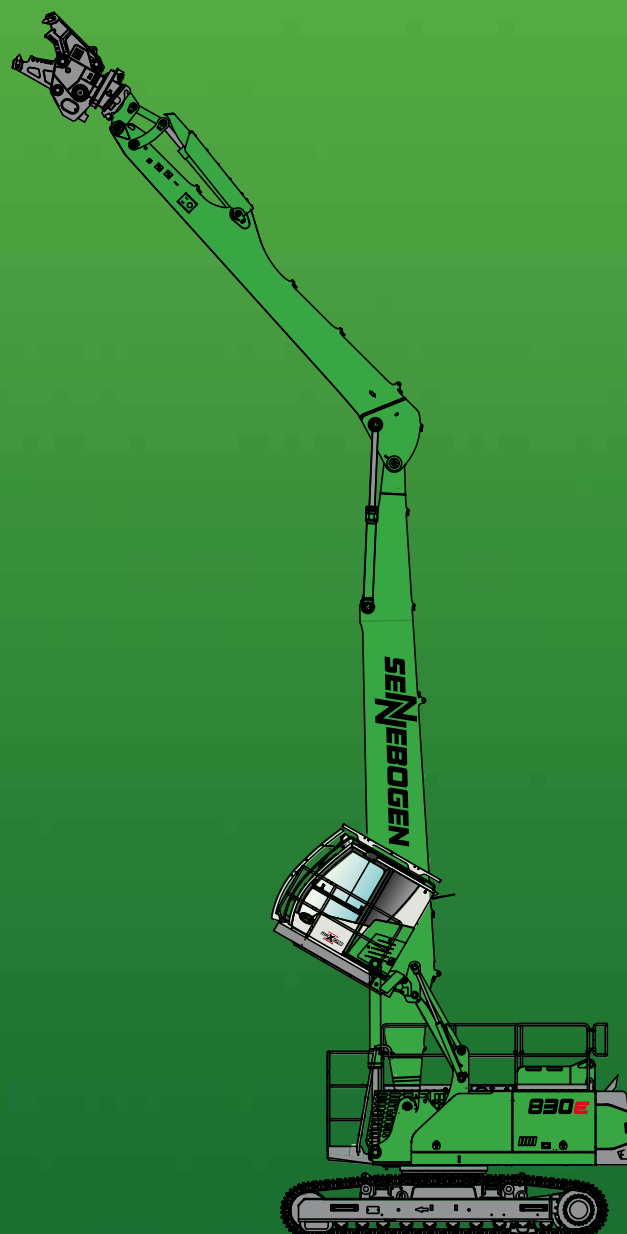


Easy to transport
transport width 3.0.m
transport length 14.6 m



830E

R



This catalog describes machine models, scopes of equipment of individual models, and configuration options (standard equipment and optional equipment) of the machines delivered by SENNEBOGEN Maschinenfabrik GmbH. Machine illustrations can contain optional equipment and supplemental equipment. Actual equipment may vary depending on the country to which the machines are delivered, especially in regard to standard and optional equipment and tolerances.

All product designations used may be trademarks of SENNEBOGEN Maschinenfabrik GmbH or other supplying companies, and any use by third parties for their own purposes may violate the rights of the owners.

Please contact your local SENNEBOGEN sales partner for information concerning the equipment variants offered. Requested performance characteristics are only binding if they are expressly stipulated upon conclusion of the contract. Delivery options and technical features are subject to change. Errors and omissions excepted. Equipment is subject to change, and rights of advancement are reserved.

© SENNEBOGEN Maschinenfabrik GmbH, Straubing, Germany. Reproduction in whole or in part only with written consent of SENNEBOGEN Maschinenfabrik GmbH, Straubing, Germany.

SENNEBOGEN

SENNEBOGEN
Maschinenfabrik GmbH
 Sennebogenstraße 10
 94315 Straubing, Germany

Tel. +49 9421 540-144/146
marketing@sennebogen.de

Order no. 299234
 830R-HDD-E-111810 -1119d-111910-2007du

GO FOR GREEN

 www.sennebogen.com